

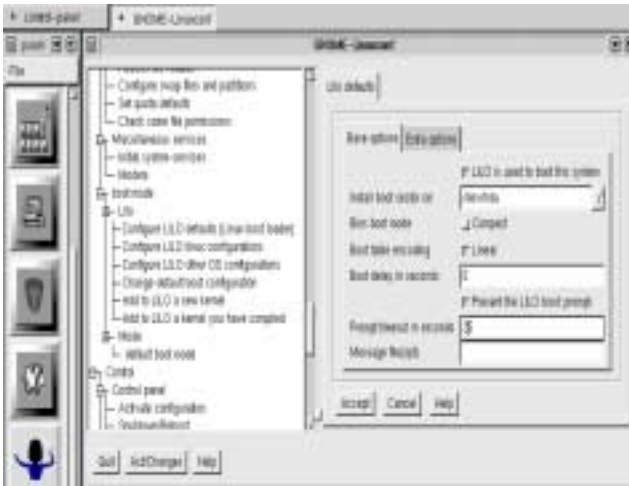
Dual Booting Linux and Windows for Non-Linux Boffins

An exchange between Angus Jack and Brian Long

Angus wrote

Take the easy route and use Linuxconf, the GUI supplied with the newer Linux distros. I have assumed that you have already installed Linux and that you are currently doing the “floppy insert routine” when you want to boot to Linux.

Run Linuxconf from one of the command shells after stating Xwindows in Linux. You get a GUI for configuring many aspects of Linux (you can add more “modules” also from within Linuxconf if you wish, I have added Apache and fetchmail for example). Go to Configure LILO defaults (Linux boot loader) and select it: you will get a screen like snapshot 1. below.



If your Windows boot is located on C: drive, then install boot sector on /dev/hda and set the prompt timeout to something reasonable, say 25 seconds, otherwise when you boot the initial LILO option will flash past you as the default setting is 5.

Then select Configure LILO other operating systems (see snapshot 2 below), set the label to something relevant that you can remember, say windows, and the location as seen by Linux, of the Windows boot loader. If C: drive is indeed hda then type in (or select) /dev/hda. You can determine which drive is what if you look at the opening screen when you do a normal boot into Linux from your floppy, or you can examine the log file located at /var/log/dmesg if it all flashes past too fast which it does for me!



When you reboot your machine the LILO boot loader will kick in first with the prompt LILO.... before your time out of 25 seconds is up type in “windows” (or whatever you have chosen) and you will be presented with your normal Windows boot screen.

Brian's reply

I have now worked out how to get Linux into the NT Boot loader. Instructions go something like:

Get hold of BOOTPART.EXE (attached). A more up to date version can possibly be obtained from <http://www.winimage.com/bootpart.htm>

BootPart on its own lists out all your partitions with numbers.

BootPart /? explains all its options

Identify which partition number Linux is on by running: BootPart. We'll call it XYZ.

Run: BootPart XYZ BootSect.Lnx Linux

This creates a boot sector for Linux in the file BootSect.Lnx, and adds an entry into Boot.Ini for you. You can now edit Boot.Ini to customise the name used for your Linux boot option.

Job done.

**World-class *training* for
Delphi professionals
now in Ireland**



Brooks Associates Ireland

Tel 01-832 0373

brooksassociates@eircom.net

www.brooksassociates.com



TDMWeb

Your website in safe hands www.TDMWeb.com

Why pay an arm and a leg to get your website online?

A website is no longer a luxury: it's de rigeur for just about every business, especially for software developers. But when you check the prices for website and email hosting, don't they seem high?

That's what we thought too, so we've set up facilities to offer you high quality but affordable website and email hosting.

Who are we? iTec, publishers of [The Delphi Magazine](#) and [Developers Review](#): so you know your site is in safe hands with us.

How does it work? Simply select the package you need from our [Products & Prices](#) page and call us to place your order. If you don't have a domain name, we can register one for you, otherwise we'll arrange to transfer your existing domain name to one of our servers. We'll set up an ftp account so you can upload your website files, create your mailboxes to your specification and, before you know it, you're online!

If you don't have a website yet, we can design and maintain one for you (ideal for small companies with limited resources). For more information on our website design services, email Martin at martin@tdmweb.com.

We'll even give you a discount if you're a subscriber to The Delphi Magazine or Developers Review (just give us your subscriber details when you order).

What could be simpler? Call us today to find out more



Angus' Nifty Tips

Launch Windows Find Dialog at the click of a button, uses ShellAPI

```
unit Find;

interface

uses
  Windows, Messages, SysUtils, Classes,
  Graphics, Controls, Forms, Dialogs,
  ShellAPI, StdCtrls;

type
  TForm1 = class(TForm)
    Button1: TButton;
    procedure Button1Click(Sender:
      TObject);
  private
    { Private declarations }
  public
    { Public declarations }
  end;

var
  Form1: TForm1;

implementation

{$R *.DFM}

procedure TForm1.Button1Click(Sender:
  TObject);
begin
  ShellExecute(Application.Handle,
  'Find', 'c:\', nil, nil, SW_SHOWNORMAL);
end;
```

Inprise/Borland European Support Services

Free support for installation: **020 7341 5510**

Technical (chargeable) support: **020 7341 5511**

For complete information on Technical Support Services ring: 0800 454065 (UK), +44 (0)20 7814 5047 (IRL)

And your regular contact numbers for Inprise/Borland UK

Customer Services: 0800 454065

Inprise/Borland UK switchboard: 01189 320022 **Fax:** 01189 320017

Connections:

Krystyna Niedzwiedzka connections@inprise.com or kniedzwiedzka@inprise.com

Marketing:

Clare Coull ccoull@inprise.com or AlistairRobbie arobbie@inprise.com

Product Marketing:

Jason Vokes jvokes@inprise.com

Pre-sales Technical Advice:

Jon Harrison jharrison@inprise.com

Corporate Sales:

Chris Purrington cpurrington@inprise.com

On-line support is available on newsgroup forums.inprise.com. For more information, visit www.inprise.com/newsgroups/

For Year 2000 compliance: <http://www.inprise.com/devsupport/y2000>

Interactive website for developers: <http://community.borland.com>